




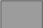
GENERALIZED ISOCHORE MAP OF ST. PETER SANDSTONE MINERAL RESOURCE IN MISSOURI

MISSOURI DEPARTMENT OF NATURAL RESOURCES
DIVISION OF GEOLOGY AND LAND SURVEY
INDUSTRIAL MINERALS UNIT
P.O. BOX 250, ROLLA, MO 65402-0250
www.dnr.mo.gov/geology
573-368-2100


Justin G. Davis
2011

Explanation


St. Peter Sandstone Occurrence

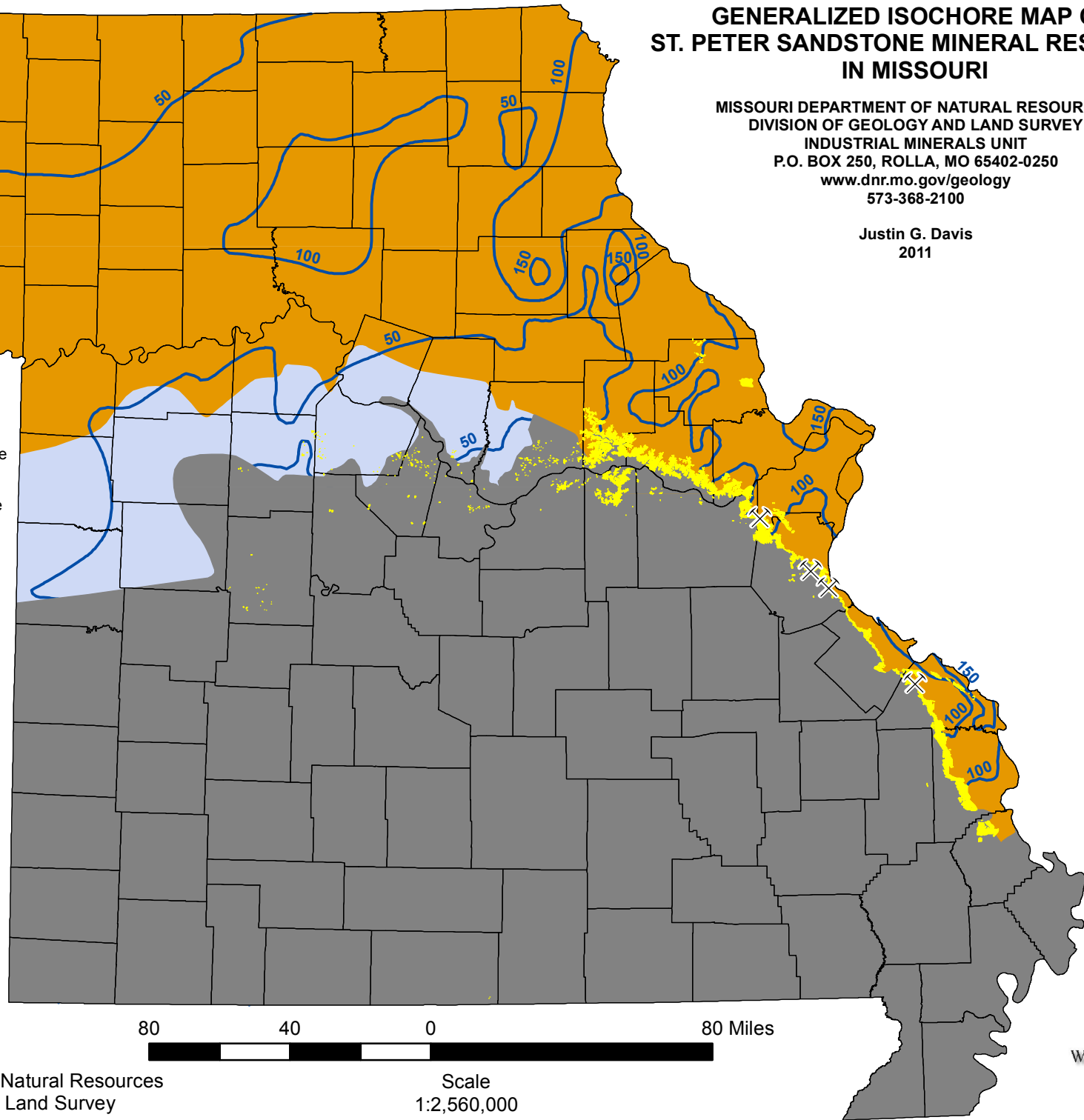
-  Exposed at surface or covered by surficial materials
-  Continuously present in subsurface and covered by bedrock
-  Discontinuously present at surface and in subsurface
-  Absent

Isochore Contour Lines

-  Lines of equal drilled thickness at 50-foot contour intervals, all labeled with thickness in feet

St. Peter Sandstone Mines

-  Active as of 2011



Missouri Department of Natural Resources
Division of Geology and Land Survey

Scale
1:2,560,000

