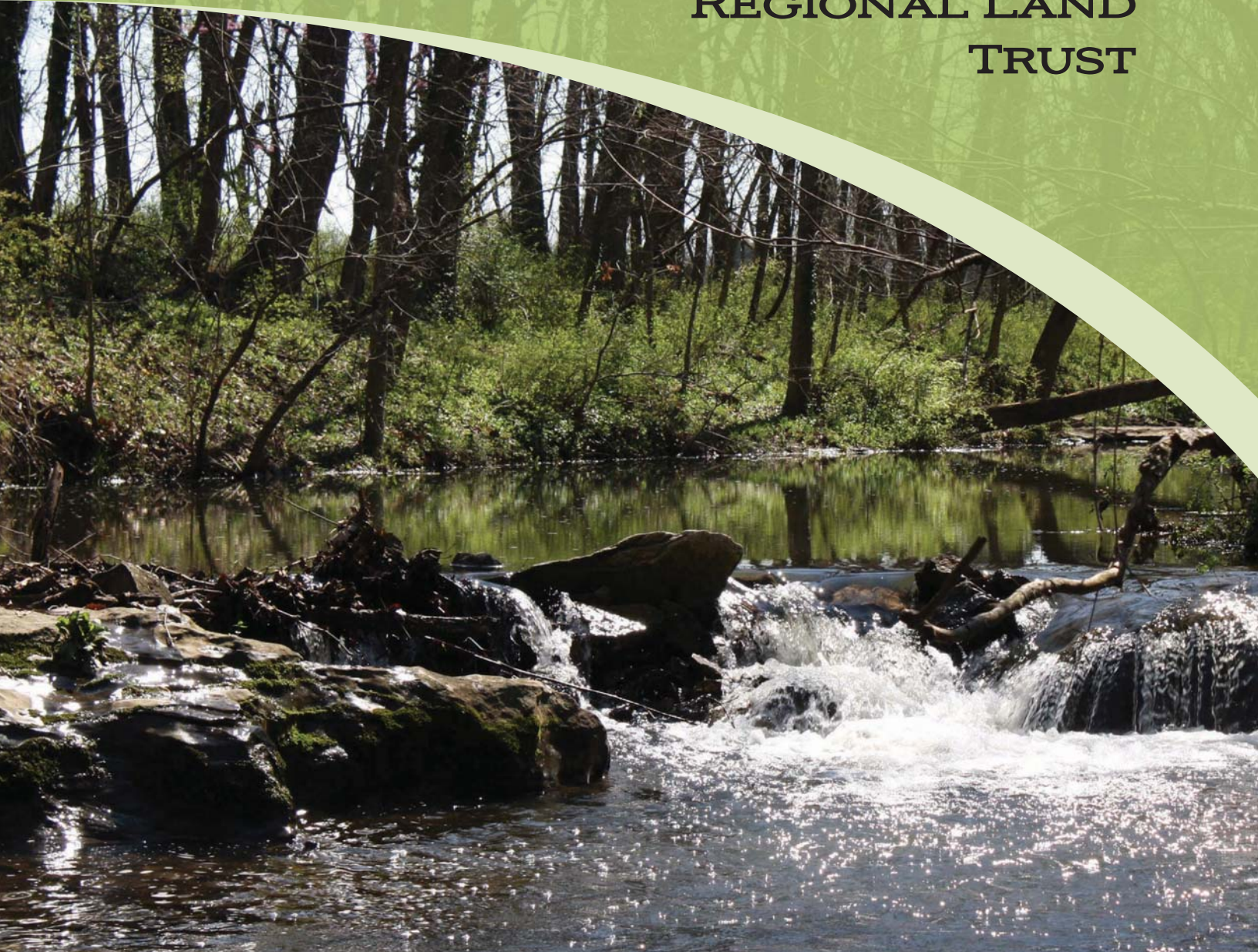




OZARK

REGIONAL LAND
TRUST



ANNUAL REPORT 2010-2011

EMPOWERING PEOPLE TO PROTECT THE OZARKS FOREVER



DEAR ORLT SUPPORTERS,

What a difference two years can make! I am so proud to announce that Ozark Regional Land Trust has protected more properties in 2010 and 2011 than in any other two-year period in our 28-year history.

Hats off to our staff, but also to you. Without your dedicated volunteer efforts, donations and other forms of support, this accomplishment would not have been possible.

Between 2010 and 2011 ORLT worked with local landowners to protect 16 additional properties and more than 3,500 acres of scenic forests, working farms, streams, bluffs, glades, caves and the creatures who call them home. These properties may be special to all of us but most importantly, they are crucial to the unique beauty and character of the Ozarks.

In an effort to strengthen stewardship of our protected properties, we added a new staff member in 2011 to focus on monitoring conservation easements, developing management plans and coordinating the Katy Land Trust—a primary focus area. We also continue to meet our annual goal of successfully monitoring every ORLT easement and our bi-annual goal of monitoring every nature preserve comprising more than 25,500 acres in total.

Regarding our work on monitoring ourselves as a properly functioning organization, we remain a Land Trust Alliance (LTA) member land trust. LTA is the national convener, strategist and representative of more than 1,700 land trusts across the country. We also continue to uphold LTA's Land Trust Standards and Practices, the guidelines for responsible and ethical operation of a land trust.

While we have much to celebrate, we also have much more to do. In the coming years, we look forward to protecting even more fragile landscapes and habitats. But we can only accomplish this with your ongoing support.

Thank you to all of our volunteers, members, donors and other supporters. It is you who make our work possible. It is you who can protect the Ozarks—FOREVER.

A handwritten signature in black ink, appearing to read 'Jake W. Reby'. The signature is fluid and cursive, with a horizontal line extending from the end.

Jake W. Reby, President, ORLT Board of Directors

Photo Credits

Front cover, top: Waterfall on the Scott property.

Front cover, bottom (L to R): Burkhardt farm; aerial view of Burkhardt farm; Huzzah Creek on the Yocom farm.

Back cover, bottom (L to R): Burkhardt farm; canoe trip participants at the 2011 Annual Membership Meeting with the Fordyce

property on the Meramec River in the background; creek on the Mathews property.

Photos by Ted Heisel, Daniel Burkhardt, Steve Stelzer-Eye in the Sky, Abigail Lambert.

PROTECTED PROPERTIES 2010



photo by Ted Heisel

MATHEWS CONSERVATION EASEMENT

Warren County, MO, 452 acres

In 1954, Burrell and Ruby Pickering purchased farmland and forest along Highway O and named it Sunny Ranch. With their passion for nature and wildlife, this land became a nature sanctuary as the two cleared trails through the oak forests, erected bluebird houses and built a museum for school children to visit. Decades later, their daughter Gwenn and her husband, Joe Mathews, built a home and stables here. They fulfilled the Pickering's dream by forever protecting the land with a conservation easement.



photo by Ted Heisel

FORDYCE CONSERVATION EASEMENT

Franklin County, MO, 267 acres

Debbie Fordyce has protected almost two-thirds of a mile of scenic bluffs and forested hills along the middle-Meramec. The healthy riparian corridor on this property provides valuable wildlife habitat and helps protect water quality of the Meramec River. Debbie's efforts also protect 250 acres of high quality, native hardwood forest from being converted to other uses and utilizes the practical tool of sustainable forest management.

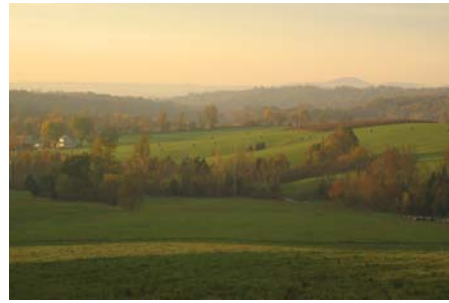


photo by Daniel Burkhardt

BURKHARDT CONSERVATION EASEMENT

Warren County, MO, 195 acres

The Katy Land Trust, a program of ORLT, secured its first conservation easement thanks to the generosity of Dan and Connie Burkhardt. This working farm includes a vineyard, hayfields, row crops, cattle and forest along Highway 94. The Burkhardts are grateful to the property's previous owners, who chose not to subdivide or develop the land in the preceding century. Dan and Connie know they can continue to enjoy grazing cattle and raising crops and that these beautiful hills near the Missouri River will never be threatened by development. Protection of this property also sets a leading example for other landowners along Highway 94, the Katy Trail, and the Missouri River; all of which make up the primary focus area of the Katy Land Trust.

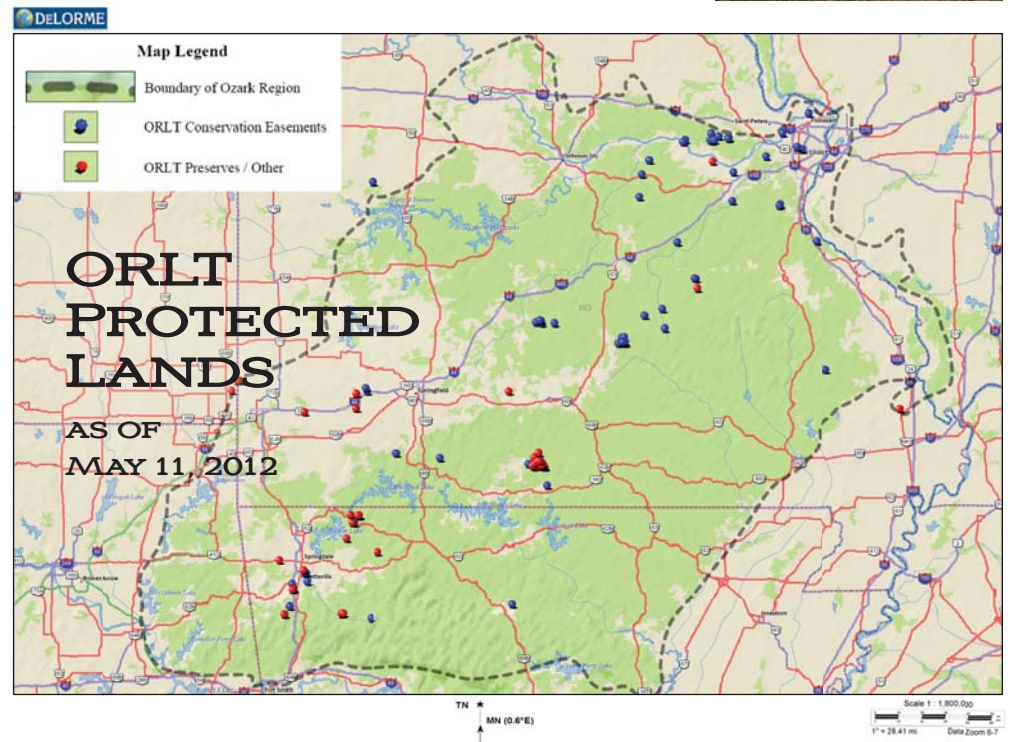
SCOTT CONSERVATION EASEMENT

Lawrence County, MO, 295 acres

By protecting the land their family has lived on and farmed for more than 100 years, Mary Scott and her daughter, Anne Lewallen, have also helped protect the endangered Ozark cavefish. These blind and colorless fish have declined in many areas as a result of groundwater pollution. Protection of this farm ensures that its water-purifying forests and hayfields will exist forever. The property is also located near the protected Salveter land. We thank the Missouri Department of Conservation, U.S. Fish & Wildlife Service and Wildlife Conservation Society for support of this project and effort to protect the health of Ozark cavefish habitat.



photo by Jim Lowe



PROTECTED PROPERTIES 2011



photo by Preston Lacy

ANONYMOUS CONSERVATION EASEMENT

Warren County, MO, 138 acres

This easement protects high bluffs, forest and farmland along the Missouri River and Katy Trail; a focus area of ORLT. Trail users are now assured that the views of forestland and the impressive 200 foot limestone bluffs will always be protected from development. From high atop the bluff line one may enjoy an astonishing view overlooking the Missouri River valley and Katy Trail. With its hayfields and actively managed woodlands, this property illustrates the flexibility of conservation easements and is a prime example of the kind of properties the Katy Land Trust works with landowners to protect.



photo by Abigail Lambert

YOCOM CONSERVATION EASEMENTS

Crawford County, MO, 273 acres

Located on the Huzzah Creek, a major tributary of the Meramec River, these easements protect more than a mile of river frontage, plus small headwater streams and hardwood forests in one of our priority focus areas. These adjoining tracts of land are also adjacent to the Mark Twain National Forest. This project enabled a local rancher to buy and permanently protect the land from development while continuing to operate a productive cattle farm. ORLT was able to purchase a conservation easement from landowners Steve and Heidi Yocom shortly after they purchased the farm, next to their existing land and homestead.

Burkhardt property in Warren County



photo by Abigail Lambert

SAMPLE CONSERVATION EASEMENT

Dent County, MO, 384 acres

Jim and Joan Sample's donation of a conservation easement on part of their 760-acre bison ranch in the upper Meramec River watershed protects woodlands and headwater streams. This area is a priority for ORLT's conservation work. The Samples plan to protect the rest of their farm, located near Salem, by donating a second conservation easement in the near future. Jim and Joan own United Country-Salem Realty and Meramec Bison Farm, LLC.



photo by Abigail Lambert

MILLER CONSERVATION EASEMENT

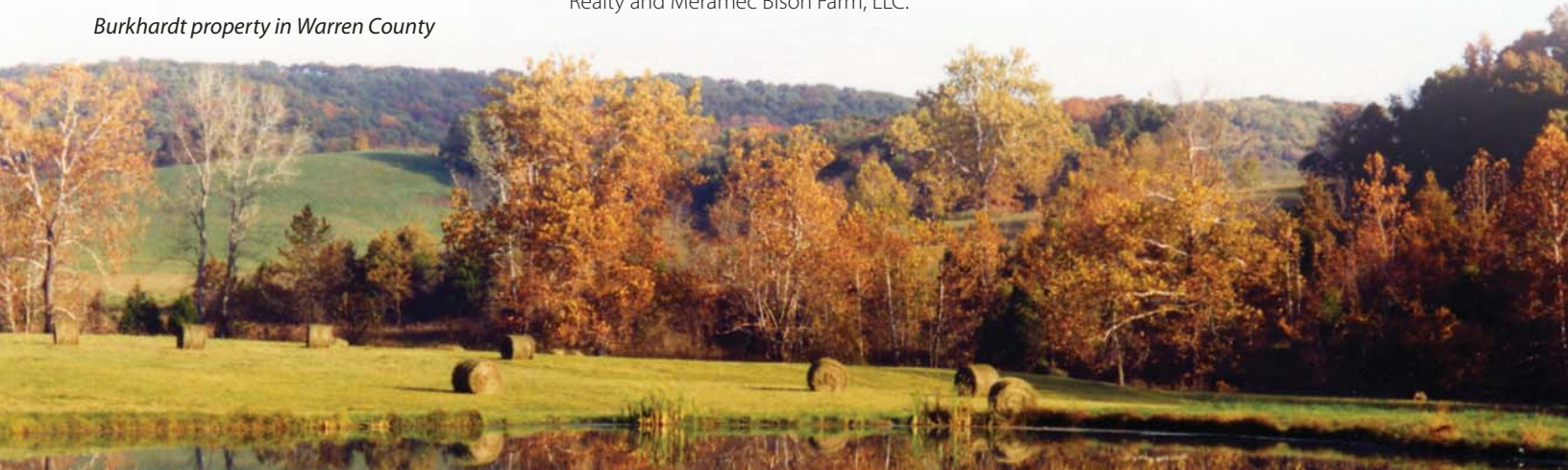
Crawford County, MO, 120 acres

Edith Miller's land lies in the Meramec River watershed, a key focus area for ORLT. The property is near Onondaga Cave State Park. Edith's donation of a conservation easement on her land protects important sandstone glades and woodlands. It also contributes to the broader conservation goal of maintaining the ecological integrity of the Meramec River watershed, as well as the creatures who call it home.

BURKHART CONSERVATION EASEMENT

Ozark County, MO, 181 acres

This protected property is situated on each side of Bryant Creek and contains about 4,500 feet of the riparian corridor there. Bryant Creek is one of a few streams where there is a known population of the Ozark hellbender, an endangered salamander. Donna Burkhardt's land also lies in a region with many other protected lands, including ORLT's Alford Forest, the Mark Twain National Forest and the Department of Conservation's Caney Mountain Conservation Area. Her generous donation helps expand protection of Bryant Creek.





Cavefish in stream on Salveter Property

photo by Blake Stephens

SALVETER CONSERVATION EASEMENT

Lawrence County, MO, 415 acres

Located within the Billies Creek Recharge Area, near Halltown, this easement protects fragile hardwood forests, pastures and headwater streams. The land contains several springs and caves, including one cave inhabited by the endangered Ozark cavefish. It is also close to the protected Scott property. A professional management plan guides all forestry activities on the property and nearly 90 acres of forested riparian corridor along the creek now receives heightened protection. ORLT thanks the Missouri Department of Conservation, U.S. Fish & Wildlife Service and Wildlife Conservation Society for their support of this project.



photo by Ted Heisel

MCGEE CONSERVATION EASEMENT

Gasconade County, MO, 649 acres

This conservation easement protects a property that is about two-thirds forested with mostly native, mature oak-hickory trees. The forests contain impressive examples of white oak, red oak and post oak. First Creek, a perennial stream and tributary of the Gasconade River, flows through the property. The river contains one of the most robust populations of mussels in Missouri, including the endangered pink mucket and scaleshell and a candidate for the endangered list; the spectaclecase.



Holzknacht Family

photo by Ted Heisel

HOLZKNECHT CONSERVATION EASEMENT

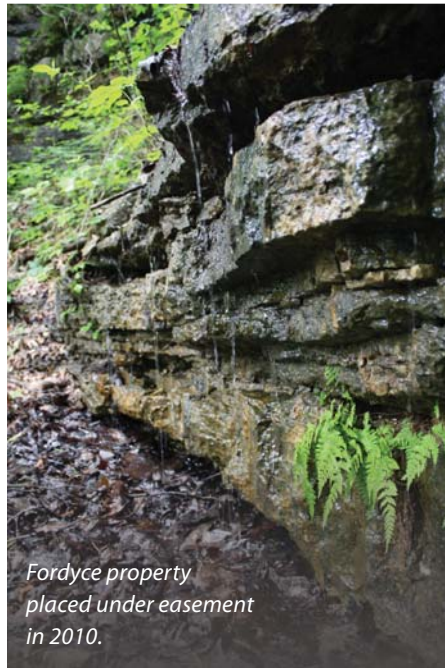
Cedar County, MO, 110 acres

Situated on a high point above Stockton Lake, an area with an impending development threat, the Holzknacht easement preserves a scenic lake viewshed. The majority of the property contains lush forest including various kinds of oak trees as well as hickory, black walnut and honey locust. A small spring and stream are located on the land and now that they are protected, the water quality of Stockton Lake will also benefit.

FORDYCE CONSERVATION EASEMENT

St. Louis County, MO, 88 acres

In an otherwise suburban setting, within the St. Louis metropolitan area, the Fordyce property contains beautiful native hardwood forests. This easement protects other important scenic resources in an area facing development threats, including a small headwater stream and views from the Big River Bluffs above, which overlook the Missouri River.



Fordyce property placed under easement in 2010.

HEISEL CONSERVATION EASEMENT

Franklin County, MO, 58 acres

Located near Washington, Missouri, the land in this area has experienced serious development pressure for the past 20 years. Travelers along Old Highway 100 will still be able to enjoy the view of the historic farmstead and extensive wildlife habitat, as the land stretches to the Missouri River and beyond. The Heisels are working to expand the boundary of the property's wooded draws and plan for additional ecological restoration work that will protect water quality.

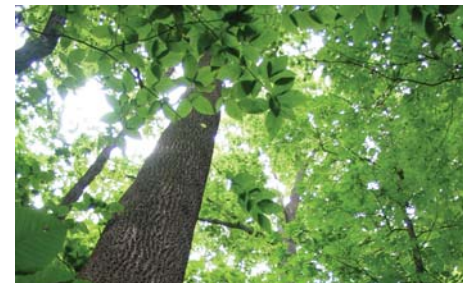


photo by Ted Heisel


FRIEND FAMILY NATURE PRESERVE

Scott County, MO, 26 acres

The Friend Family Nature Preserve was donated by Nancy F.B. and Raymond Neil Adams. This land was originally part of Nancy Adams' family farmstead. The 250-acre bottomland portion was previously donated to Southeast Missouri State University for perpetual protection as a working farm. The property donated to ORLT is completely forested on a mostly west facing hillside overlooking the bottoms of the Mississippi delta. There are few signs of previous timber harvesting and many large, native tree species remain. The donation agreement allows for significant greenspace protection visible from the adjacent town of Oran and State Highway 77, which runs next to the land.

STEWARDSHIP DIRECTOR PROFILE

MEET PRESTON LACY, STEWARDSHIP SUPERHERO



To meet the growing demands of working with landowners to protect more than 70 conservation easements (on 20,000 acres of land) and managing 20 ORTL-owned preserves, we hired Preston Lacy as full-time Stewardship Director and Katy Land Trust Coordinator in 2011. Preston grew up working on his family's farm in northern Kentucky, where he helped raise cattle and crops. As he witnessed rapid development consume local farms, Preston developed an interest in land conservation.

Having served with Heartlands Conservancy where he worked as an environmental land use planner, Preston also worked with interested landowners to develop conservation easements. Prior to earning joint Master's degrees in Urban Planning and Public Administration from the University of Louisville, Preston graduated from the University of Kentucky with a Bachelor's degree in Natural Resource Conservation and Management.

In his current role Preston focuses on stewardship activities, including monitoring conservation easements and preserves, developing management plans, implementing the plans to restore each property's ecological integrity, and, sometimes turning preserves into publicly accessible parks. For the Katy Land Trust, Preston provides information to landowners about ways to protect their farms and forests and helps them develop conservation easements.

Once a landowner chooses to place a conservation easement on their property it establishes a permanent agreement that restricts certain development or degradation of the property's natural resources. This is why Preston schedules annual visits with landowners of conservation easements to make sure that no issues have arisen and that the landowner's future plans follow the easement's original intent. This also gives Preston the chance to catch up with landowners while exploring their beautiful properties.

Management plans are flexible documents that chart a course for the long term goals of Nature Preserves (ORLT-owned properties). These plans are necessary to ensure their protection and proper maintenance. Preston then implements the recommendations of these plans to ensure that ORTL-protected properties serve as leading examples of land protection in the Ozarks. A few examples of his stewardship work include organizing volunteers to; remove invasive species, develop trails and stream crossings, clean up trash and provide access to land for farmers at New Pear Farm to expand their sustainable and organic farming businesses.

For more information on our stewardship efforts or the Katy Land Trust, call 314-920-0038 or email pslacy@ortl.org.

TO OUR DEDICATED SUPPORTERS

Thank you for helping to protect the Ozarks forever. You make all of our achievements possible. To become even more involved in our efforts, call 417-839-0909 or email ortl@ortl.org.

OZARK REGIONAL LAND TRUST

STATEMENT OF NET ASSETS

FOR THE PERIOD ENDING DECEMBER 31, 2010

Assets

Operating Funds	\$155,064
Dedicated Project Funds	\$872,348
Operating Endowment	\$143,296
Stewardship Fund	\$1,308,468
Land and Equipment	\$4,103,719

Total Assets \$6,582,895

Total Liabilities \$(92,972)

Total Net Assets \$6,489,922

FOR THE PERIOD ENDING DECEMBER 31, 2011

Assets

Operating Funds	\$248,142
Dedicated Project Funds	\$612,046
Operating Endowment	\$154,391
Stewardship Fund	\$1,427,525
Land and Equipment	\$4,189,698

Total Assets \$6,631,801

Total Liabilities \$(94,363)

Total Net Assets \$6,537,438

Note: The above are derived from audited financial statements of the Ozark Regional Land Trust. The above financial statements do not reflect the value of donated conservation easements.

BOARD OF DIRECTORS

Jake W. Reby, St. Louis, MO,
President

David Watson, Wildwood, MO,
Vice-President

Larry Hummel, Wildwood, MO,
Treasurer

Brian Weaver, St. Louis, MO,
Secretary

Rob Bagby, Ballwin, MO

Nicole Brueggeman, St. Charles, MO

Gregg Galbraith, Carthage, MO

David Haenke, Gainesville, MO

Jillian Hishaw, Charlotte, NC

Kurt Homeyer, Ellington, MO

Alice Sterkel, St. Louis, MO

Andy Thomas, Mt. Vernon, MO

Jeff Winzerling, St. Louis, MO

Duane Woltjen, Fayetteville, AR

Lois Wyman, Union, MO

STAFF

Ted Heisel,
Executive Director

Abigail Lambert,
*River Stewardship Project
Coordinator*

Preston Lacy,
*Stewardship Director/
Katy Land Trust Coordinator*



Ozark Regional Land Trust
PO Box 440007
St. Louis, MO 63144
orlt@orlt.org • www.orlt.org
(417) 839-0909

